

- 8' to 20' mounting heights.
- 4" and 5" square poles.
- Luminaires may be mounted on tenons, brackets or shaft may be drilled to manufacturer's mounting specifications.

SPECIFICATIONS

All aluminum alloys shall comply with metallurgical and mechanical properties set forth in the Aluminum Association Standards.

Shaft: The shaft will be extruded from all new 6000 series alloy aluminum tubing. Valmont square straight shafts shall be supplied with a square top closure when the shafts are to be drilled for side mounting of luminaires. Valmont square straight shafts with a satin finish shall be longitudinally polished, resulting in a high quality brushed finish. After finishing, each pole shall be fully wrapped for protection in shipment.

Universal Hinged Base: The universal hinged anchor base is cast from A356 alloy aluminum. The shaft shall be inserted into the tilting section of the hinged base and shall be joined to it by continuous circumferential welds. The tilting and anchored sections of the hinged base shall be joined by a 3/4" diameter solid aluminum pivot rod. The tilting section of the hinged base shall be held in a vertical position by (3) 1/2"-13 x 2" stainless steel hex head bolts. These bolts shall attach to stainless steel inserts cast into the aluminum base. A cast aluminum 2-piece cover is included. The completed assembly shall be heat treated to a T6 condition.

Anchor Bolts: Each anchor base shall include: (4) steel hot dip galvanized anchor bolts each with (2) nuts and (2) flat washers sized to match the anchor bolts.

Special Finishes: Natural anodize, duranodic, or painted finishes may be specified as an addition to the pole satin finish. All aluminum parts and accessories shall receive a finish similar to that specified.

Handhole: Available as an option.

CATALOG LOGIC

Feet and Inches	Top Diameter	Base Diameter	Wall Thickness	Shape of Shaft	Base or Mounting	Fixture Mounting	Finishes	Options
<input type="text"/>	<input type="text"/>	<input type="text"/>	<input type="text"/>	<input type="text"/>	<input type="text"/>	<input type="text"/>	<input type="text"/>	<input type="text"/>

Feet & Inches*	Diameter*	Wall Thickness*	Shape of Shaft	Base or Mounting	Fixture Mounting	Finishes	Options
0800 - 8'	TOP DIAMETER IN INCHES	THICKNESS IN 32NDS OF AN INCH	Y - Square Straight	H - Hinged Base	D1 - 1@90° D2 - 2@180° D3 - 3@120° D4 - 4@90° D5 - 2@90° D6 - 3@90° P2 - 2-3/8" x 4 Tenon P9 - Other Tenon (Please Specify)	POLYESTER POWDER DBL - Black DCG - Charcoal Gray DMB - Med Bronze DSB - Steel Blue DTG - Dark Green SC - Special Color (Please Specify) ANODIZED 204 - Clear Natural 312 - Med Bronze* 335 - Black*	DBR - Bright Red DDB - Dark Bronze DNA - Natural Alum DSS - Sandstone DWH - White 311 - Light Bronze* 313 - Dark Bronze* * Duranodic Anodize
1000 - 10'	40 - 4"	4 - 4/32" or 0.125" Wall					See Accessory Section (Please Specify with Code #)
1200 - 12'	50 - 5"	6 - 6/32" or 0.188" Wall					
1400 - 14'	BASE DIAMETER* IN INCHES						
1600 - 16'	40 - 4"						
1800 - 18'	50 - 5"						
2000 - 20'							

* For available Base Diameter, Wall Thickness and Length Combinations, see Dimensional Load Data Table that follows.

BRUSHED
SBF - Satin Brushed Finish

Customer Approval:

signature

date

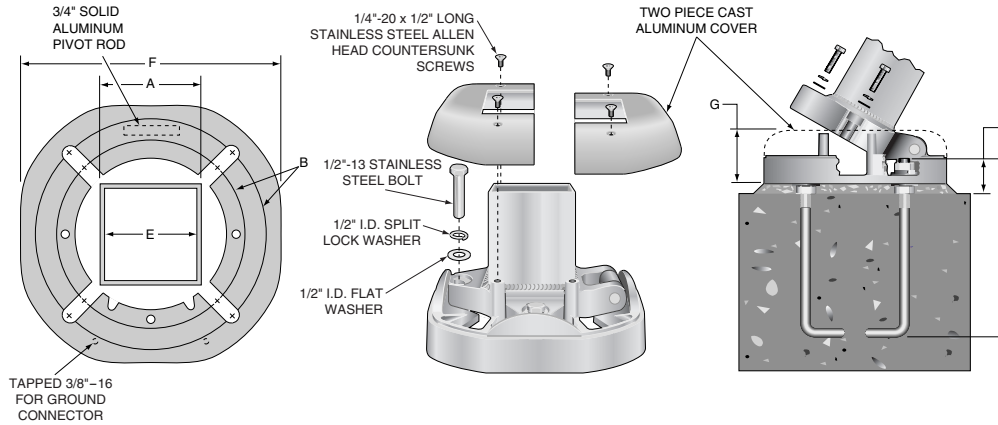
Job Name: _____	Quote: _____
Client Name: _____	
Created By: _____	Date: _____

8' TO 20' SQUARE STRAIGHT HINGED BASE POLES

ANCHOR BASE AND LOAD DETAIL

BASE DIMENSIONS

A	B	C	POLE HEIGHT	POLE WALL	D	E	CONDUIT PROJECTION	F	G
SQUARE SIZE	BOLT CIRCLE	BOLT PROJECTION			BOLT SIZE	CONDUIT OPENING		WIDTH	HEIGHT
4"	8-1/2"-10"	3-1/2"	8' - 18"	.125"	3/4" -17"	3-1/2"	1-1/2"	11-11/16"	3-1/16"
4"	8-1/2"-10"	3-1/2"	16' - 20"	.188"	3/4" -17"	3-1/2"	1-1/2"	11-11/16"	3-1/16"
5"	9-5/16"-10"	3-1/2"	18' - 20"	.188"	3/4" -17"	4-1/2"	1-1/2"	11-11/16"	3-1/16"



DIMENSIONAL AND LOAD DATA

TYPICAL WEIGHT AND ALLOWABLE SIZE OF LUMINAIRES*							DIMENSIONS OF POLES			
NOMINAL MOUNTING HEIGHT	TYPICAL LUMINAIRE WEIGHT (LBS.)	EFFECTIVE PROJECTED AREA IN SQUARE FEET AT:					POLE HEIGHT	SQUARE SIZE	WALL	MODEL NUMBER **
		70 MPH	80 MPH	90 MPH	100 MPH	110 MPH				
8'	50	26.6	19.9	15.2	11.9	9.5	8'	4"	.125"	0800 - 40404YH
10'	50	20.6	15.2	11.4	8.8	6.8	10'	4"	.125"	1000 - 40404YH
12'	50	16.0	11.5	8.5	6.3	4.6	12'	4"	.125"	1200 - 40404YH
14'	50	12.9	9.0	6.4	4.5	3.1	14'	4"	.125"	1400 - 40404YH
15'	50	9.1	6.2	4.2	2.8	1.8	15'	4"	.125"	1500 - 40404YH
16'	50	7.9	5.3	3.4	2.1	1.1	16'	4"	.125"	1600 - 40404YH
16'	50	13.3	9.4	6.7	4.7	3.3	16'	4"	.188"	1600 - 40406YH
18'	75	6.4	4.0	2.3	1.1	—	18'	4"	.125"	1800 - 40404YH
18'	75	11.0	7.4	5.0	3.3	2.0	18'	4"	.188"	1800 - 40406YH
18'	75	19.2	13.5	9.6	6.8	4.7	18'	5"	.188"	1800 - 50506YH
20'	75	8.8	5.6	3.5	1.9	—	20'	4"	.188"	2000 - 40406YH
20'	75	16.4	11.2	7.6	5.0	3.2	20'	5"	.188"	2000 - 50506YH

CAUTION: Raising or lowering of the pole requires adequate preparation. Do not underestimate the force required to raise or lower poles with heavy luminaires at the top. **Handholes:** Peripherally reinforced hand holes are available as an accessory.

* EPA calculations are based on a 1.3 Gust Factor and a center of gravity at the nominal mounting height. Variations from sizes listed above, available upon inquiry at the factory. Satisfactory performance of lighting poles is dependent upon the pole being properly attached to a supporting foundation of adequate design. Valmont does not design or offer recommendations for foundations.

** Model number does not include mounting options or finish designation.

SFC7085 08/07 www.valmontstructures.com carries the most current spec information and supersedes these guidelines.