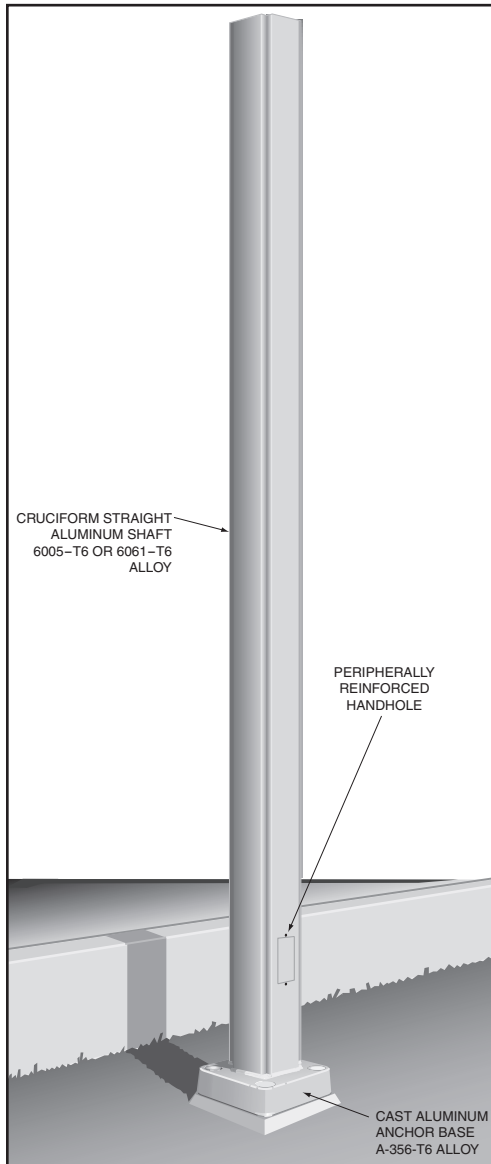


8' TO 30' CRUCIFORM STRAIGHT 4-BOLT ANCHOR BASE POLES



- 8' to 30' poles.
- 4" and 6" cruciform poles.

SPECIFICATIONS

All aluminum alloys shall comply with metallurgical and mechanical properties set forth in the Aluminum Association Standards.

Shaft: The shaft shall be extruded from all new seamless 6000 series alloy aluminum tubing. Cruciform shafts shall be supplied with a matching top closure when the shafts are to be drilled for side mounting of luminaires. Valmont cruciform straight shafts with a satin finish shall be longitudinally polished, resulting in a high quality brushed finish. After finishing, each pole shall be fully wrapped with neutral PH krinkle/kraft paper for protection in shipment.

Anchor Base: The anchor base is cast from A356 alloy aluminum and is circumferentially welded to the shaft. The assembly shall be heat treated to a T6 temper after all structural welding has been completed. The anchor bolt recesses in the anchor base casting shall be flush covered by (4) tamper resistant aluminum nut cover disks.

Handholes: All cruciform poles shall include a wire access opening with a surface-mounted cover. The opening in the 4" cruciform poles shall be 2" x 4" centered 12" above the bottom of the pole. The opening in the 6" poles shall be 2" x 4" centered 18" above the bottom of the pole. The ground lug with 5/16"-18 tapped hole shall be located opposite the handhole. Consult factory for availability of larger openings and other opening locations.

Anchor Bolts: Each anchor base shall include: (4) steel hot dip galvanized anchor bolts each with (2) nuts and (2) flat washers sized to match the anchor bolt.

Special Finishes: Natural anodize, duranodic, or painted finishes may be specified as an addition to the pole satin finish. All aluminum parts and accessories shall receive a finish similar to that specified.

CATALOG LOGIC

Feet and Inches	Top Diameter	Base Diameter	Wall Thickness	Shape of Shaft	Base or Mounting	Fixture Mounting	Finishes	Options
<input type="text"/>	<input type="text"/>	<input type="text"/>	<input type="text"/>	<input type="text"/>	<input type="text"/>	<input type="text"/>	<input type="text"/>	<input type="text"/>

Feet & Inches*	Diameter*	Wall Thickness*	Shape of Shaft	Base or Mounting	Fixture Mounting	Finishes	Options
0800 - 8'	TOP DIAMETER IN INCHES	THICKNESS IN 32NDS OF AN INCH	Y - Cruciform Straight	4 - 4-Bolt Anchor Base	D1 - 1@90° D2 - 2@180° D4 - 4@90° D5 - 2@90° D6 - 3@90° P2 - 2-3/8"x 4 Tenon P9 - Other Tenon (Please Specify)	POLYESTER POWDER DBL - Black DCG - Charcoal Gray DMB - Med Bronze DSB - Steel Blue DTG - Dark Green SC - Special Color (Please Specify) ANODIZED 204 - Clear Natural 312 - Med Bronze* 335 - Black*Finish	DBR - Bright Red DDB - Dark Bronze DNA - Natural Alum DSS - Sandstone DWH - White * Duranodic Anodize BRUSHED SBF - Satin Brushed Finish
1000 - 10'	40 - 4"	6 - 6/32" or 0.188" Wall					See Accessory Section (Please Specify with Code #)
1200 - 12'	60 - 6"						
1500 - 15'	BASE DIAMETER* IN INCHES						
1800 - 18'	40 - 4"						
2000 - 20'	60 - 6"						
2500 - 25'							
3000 - 30'							

* For available Base Diameter, Wall Thickness and Length Combinations, see Dimensional Load Data Table that follows.

Customer Approval:

signature

date

Job Name: _____ Quote: _____

Client Name: _____

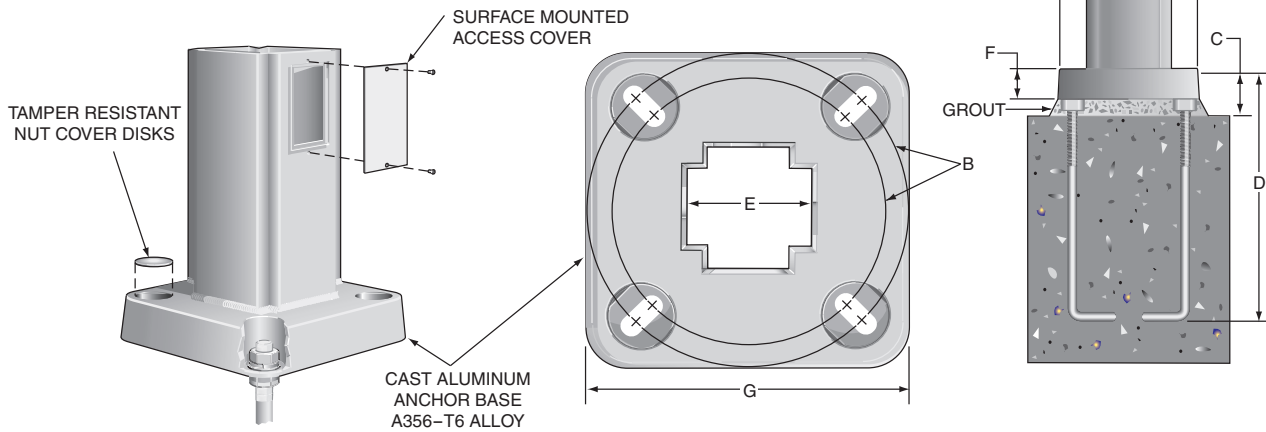
Created By: _____ Date: _____

8' TO 30' CRUCIFORM STRAIGHT 4-BOLT ANCHOR BASE POLES

ANCHOR BASE AND BOLT DETAIL

CRUCIFORM POLES

A	B	C	D	E	F	G	STANDARD HEIGHT	STANDARD WALL
SQUARE SIZE	BOLT CIRCLE	BOLT PROJECTION	BOLT SIZE	CONDUIT OPENING	BASE HEIGHT	BASE SIZE		
4" 6"	8-1/2" - 9-1/2" 12" - 13"	3-1/8" ± 1/8" 4" ± 1/8"	3/4" x 17" 1" x 36"	3-1/2" 5-1/2"	2" 2-3/4"	9-15/16" 12-3/4"	20' 20' - 30'	0.188" 0.188"



DIMENSIONAL AND LOAD DATA

TYPICAL WEIGHT AND ALLOWABLE SIZE OF LUMINAIRES*							DIMENSIONS OF POLES			
NOMINAL MOUNTING HEIGHT	TYPICAL LUMINAIRE WEIGHT (LBS.)	EFFECTIVE PROJECTED AREA IN SQUARE FEET AT:					POLE HEIGHT	OUTSIDE SQUARE	WALL	MODEL NUMBER**
		70 MPH	80 MPH	90 MPH	100 MPH	110 MPH				
8'	350	34.0	30.2	23.5	18.6	15.0	8'	4"	.188"	0800 - 40406X4
10'	260	31.5	23.5	18.0	14.1	11.2	10'	4"	.188"	1000 - 40406X4
12'	260	25.1	18.4	13.9	10.7	8.3	12'	4"	.188"	1200 - 40406X4
15'	200	14.8	10.6	7.7	5.6	4.1	15'	4"	.188"	1500 - 40406X4
18'	200	10.7	7.2	4.9	3.2	1.9	18'	4"	.188"	1800 - 40406X4
18'	260	30.3	21.7	15.9	11.7	8.6	18'	6"	.188"	1800 - 60606X4
20'	100	9.0	5.8	3.6	2.0	—	20'	4"	.188"	2000 - 40406X4
20'	150	26.1	18.3	13.0	9.2	6.4	20'	6"	.188"	2000 - 60606X4
25'	150	17.1	11.0	6.8	3.7	1.5	25'	6"	.188"	2500 - 60606X4
30'	260	9.0	4.5	1.4	—	—	30'	6"	.188"	3000 - 60606X4

* EPA calculations are based on a 1.3 Gust Factor. Variations from sizes listed above, available upon inquiry at the factory. Satisfactory performance of lighting poles is dependent upon the pole being properly attached to a supporting foundation of adequate design. Valmont does not design or offer recommendations for foundations.
** Model number does not include mounting options or finish designation.

SFC7079 08/07 www.valmontstructures.com carries the most current spec information and supersedes these guidelines.