

- 20' to 28' mounting heights.
- For single or multiple luminaire mounting.
- Luminaires may be mounted on tenons, brackets or shaft may be drilled to manufacturer's mounting specifications.

SPECIFICATIONS

All aluminum alloys shall comply with metallurgical and mechanical properties set forth in the Aluminum Association Standards.

Shaft: The shaft shall be spun tapered from all new seamless 6063 alloy aluminum and shall be heat treated to produce a T6 temper. Each shaft shall have a minimum 6" long straight section at the top to accommodate the center hub of the appropriate Valmont flood light bracket or tapered arm. Alternatively, the straight section may be drilled for mounting luminaires. All Valmont shafts shall be polished with fine grain aluminum oxide cloths, resulting in a high quality, circumferential satin brushed finish. After finishing each pole shall be fully wrapped for protection in shipment.

Anchor Base: The anchor base is cast from A356 alloy aluminum and is circumferentially welded to the shaft. The completed assembly will be heat treated to T6 temper after all structural welding is completed. A356 alloy aluminum nut covers shall be included with each anchor base unless otherwise specified.

Ground Leg Provision: Each pole shall include a 5/16"-18 tapped provision for ground connector.

Handholes: All poles include a flush covered handhole. The opening in the 5" and 6" diameter pole shall measure 3" x 5". The opening in the 7", 8" and 10" diameter pole shall measure 4" x 6". An optional 4" x 8" opening is available for 8" and 10" diameter poles.

Anchor Bolts: Each pole shall include: (4) steel hot dip galvanized anchor bolts each with (2) nuts and (2) flat washers sized to match the anchor bolts.

Special Finishes: Natural anodize, duranodic, or painted finishes may be specified as an addition to the satin brushed finish, if required. All aluminum parts and accessories shall receive a finish similar to that specified.

CATALOG LOGIC

| Feet and Inches | Top Diameter | Base Diameter | Wall Thickness | Shape of Shaft | Base or Mounting | Fixture Mounting | Finishes | Options |
|----------------------|----------------------|----------------------|----------------------|----------------------|----------------------|----------------------|----------------------|----------------------|
| <input type="text"/> | <input type="text"/> | <input type="text"/> | <input type="text"/> | <input type="text"/> | <input type="text"/> | <input type="text"/> | <input type="text"/> | <input type="text"/> |

| Feet & Inches* | Diameter* | Wall Thickness* | Shape of Shaft | Base or Mounting | Fixture Mounting | Finishes | Options |
|----------------|---------------------------------|--------------------------------------|--------------------------|-------------------------------|--|--|--|
| 1908 - 20' | TOP DIAMETER IN INCHES | THICKNESS IN 32NDS OF AN INCH | T - Tapered Round | 4 - 4-Bolt Anchor Base | D1 - 1@90° | POLYESTER POWDER | See Accessory Section (Please Specify with Code #) |
| 2208 - 23' | 30 - 3" | 4 - 4/32" or 0.125" Wall | | | D2 - 2@180° | DBL - Black | DBR - Bright Red |
| 2408 - 25' | 40 - 4" | 5 - 5/32" or 0.156" Wall | | | D3 - 3@120° | DCG - Charcoal Gray | DDB - Dark Bronze |
| 2708 - 28' | 45 - 4-1/2" | 6 - 6/32" or 0.188" Wall | | | D4 - 4@90° | DMB - Med Bronze | DNA - Natural Alum |
| | 60 - 6" | 8 - 8/32" or 0.250" Wall | | | D5 - 2@90° | DSB - Steel Blue | DSS - Sandstone |
| | BASE DIAMETER* IN INCHES | | | | D6 - 3@90° | DTG - Dark Green | DWH - White |
| | 50 - 5" 80 - 8" | | | | P2 - 2-3/8" x 4 Tenon | SC - Special Color (Please Specify) | |
| | 60 - 6" 10 - 10" | | | | P9 - Other Tenon (Please Specify) | ANODIZED | |
| | 70 - 7" | | | | | 204 - Clear Natural | 311 - Light Bronze* |
| | | | | | | 312 - Med Bronze* | 313 - Dark Bronze* |
| | | | | | | 335 - Black* | * Duranodic Anodize |
| | | | | | | BRUSHED | |
| | | | | | | SBF - Satin Brushed Finish | |

* For available Base Diameter, Wall Thickness and Length Combinations, see Dimensional Load Data Table that follows.

Customer Approval:

signature

date

Job Name: _____ Quote: _____

Client Name: _____

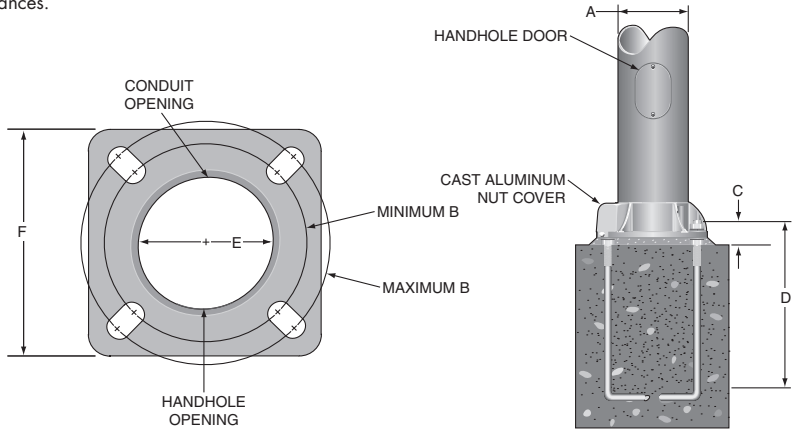
Created By: _____ Date: _____

**20' TO 28' ROUND TAPERED
4-BOLT ANCHOR BASE POLES**

ANCHOR BASE AND BOLT DETAIL

| A | B | C | D | E | F |
|----------------------|--------------------|------------------------|------------------|------------------------|------------------|
| POLE DIAMETER | BOLT CIRCLE | BOLT PROJECTION | BOLT SIZE | CONDUIT OPENING | BASE SIZE |
| 5" | 7-1/2" - 9-1/2" | 3-1/4" | 3/4" x 17" | 4-1/2" | 9-1/4" |
| 6" | 8-3/4" - 10-1/4" | 3-1/2" | 3/4" x 17" | 5-1/2" | 10-1/4" |
| 7" | 10" - 11" | 4-1/8" | 1" x 36" | 6-1/2" | 11-3/16" |
| 8" | 11" - 12" | 4-1/8" | 1" x 36" | 7-1/2" | 12" |
| 10" | 14" - 1/2" | 4-3/4" | 1" x 36" | 9-1/2" | 13" |
| *10" | 14" - 1/2" | 5-1/4" | 1-1/4" x 42" | 9-1/2" | 14" |

*0.250" Wall or Larger
10" Base Bolt Circles Have ± Tolerances.
Contact Factory for Actual Range.



DIMENSIONAL AND LOAD DATA

| TYPICAL WEIGHT AND ALLOWABLE SIZE OF LUMINAIRES* | | | | | | | DIMENSIONS OF POLES | | | | |
|--|---------------------------------|---|--------|--------|---------|---------|---------------------|------|------|-------|-----------------|
| NOMINAL MOUNTING HEIGHT | TYPICAL LUMINAIRE WEIGHT (LBS.) | EFFECTIVE PROJECTED AREA IN SQUARE FEET AT: | | | | | POLE HEIGHT | TOP | BASE | WALL | MODEL NUMBER ** |
| | | 70 MPH | 80 MPH | 90 MPH | 100 MPH | 110 MPH | | | | | |
| 20' | 150 | 7.1 | 4.6 | 2.9 | 1.9 | 1.2 | 19'8" | 3' | 5" | .125" | 1908 - 30504T4 |
| 20' | 150 | 9.8 | 6.6 | 4.6 | 3.2 | 2.2 | 19'8" | 3' | 5" | .156" | 1908 - 30505T4 |
| 20' | 150 | 12.5 | 8.7 | 6.1 | 4.5 | 3.3 | 19'8" | 3' | 5" | .188" | 1908 - 30506T4 |
| 20' | 150 | 15.9 | 11.3 | 8.4 | 6.6 | 5.2 | 19'8" | 4' | 6" | .156" | 1908 - 40605T4 |
| 20' | 150 | 19.9 | 14.4 | 10.8 | 8.5 | 6.8 | 19'8" | 4' | 6" | .188" | 1908 - 40606T4 |
| 20' | 150 | 23.9 | 17.6 | 13.4 | 10.6 | 8.6 | 19'8" | 4' | 7" | .156" | 1908 - 40705T4 |
| 23' | 150 | 11.8 | 8.0 | 5.6 | 4.4 | 3.3 | 22'8" | 4' | 6" | .156" | 2208 - 40605T4 |
| 23' | 150 | 14.2 | 10.6 | 7.8 | 6.0 | 4.7 | 22'8" | 4' | 6" | .188" | 2208 - 40606T4 |
| 23' | 150 | 17.7 | 13.4 | 10.0 | 7.8 | 6.2 | 22'8" | 4' | 7" | .156" | 2208 - 40705T4 |
| 23' | 150 | 26.5 | 19.5 | 15.1 | 11.9 | 9.5 | 22'8" | 4.5' | 8" | .156" | 2208 - 45805T4 |
| 23' | 150 | 32.8 | 24.4 | 18.8 | 15.1 | 12.1 | 22'8" | 4.5' | 8" | .188" | 2208 - 45806T4 |
| 25' | 150 | 9.5 | 6.2 | 4.2 | 3.1 | 2.4 | 24'8" | 4' | 6" | .156" | +2408 - 40605T4 |
| 25' | 150 | 12.7 | 8.6 | 6.1 | 4.6 | 3.5 | 24'8" | 4' | 6" | .188" | 2408 - 40606T4 |
| 25' | 150 | 15.8 | 11.2 | 8.2 | 6.4 | 4.9 | 24'8" | 4' | 7" | .156" | 2408 - 40705T4 |
| 25' | 150 | 22.8 | 16.7 | 12.8 | 10.0 | 8.0 | 24'8" | 4.5' | 8" | .156" | 2408 - 45805T4 |
| 25' | 150 | 28.5 | 21.2 | 16.2 | 12.8 | 10.4 | 24'8" | 4.5' | 8" | .188" | 2408 - 45806T4 |
| 28' | 150 | 12.0 | 8.1 | 5.8 | 4.2 | 3.3 | 27'8" | 4' | 7" | .156" | +2708 - 40705T4 |
| 28' | 150 | 18.2 | 13.1 | 9.9 | 7.6 | 6.0 | 27'8" | 4.5' | 8" | .156" | 2708 - 45805T4 |
| 28' | 150 | 23.2 | 16.9 | 12.9 | 10.1 | 8.0 | 27'8" | 4.5' | 8" | .188" | 2708 - 45806T4 |
| 28' | 150 | 32.6 | 24.1 | 18.6 | 14.7 | 11.8 | 27'8" | 4.5' | 8" | .250" | 2708 - 45808T4 |
| 28' | 200 | 41.6 | 31.3 | 24.2 | 19.2 | 15.3 | 27'8" | 6' | 10" | .188" | 2708 - 60106T4 |
| 28' | 300 | 56.2 | 42.6 | 33.2 | 26.4 | 21.2 | 27'8" | 6' | 10" | .250" | 2708 - 60108T4 |

SEE SECTIONS 8 AND 9 FOR MOUNTING ARMS ON POLES.

* EPA calculations are based on a 1.3 Gust Factor. Variations from sizes listed above, available upon inquiry at the factory. Satisfactory performance of lighting poles is dependent upon the pole being properly attached to a supporting foundation of adequate design. Valmont does not design or offer recommendations for foundations.

** Model number does not include mounting options or finish designation.

+ Pole includes factory installed vibration dampener.

SFC7069 08/07 www.valmontstructures.com carries the most current spec information and supersedes these guidelines.